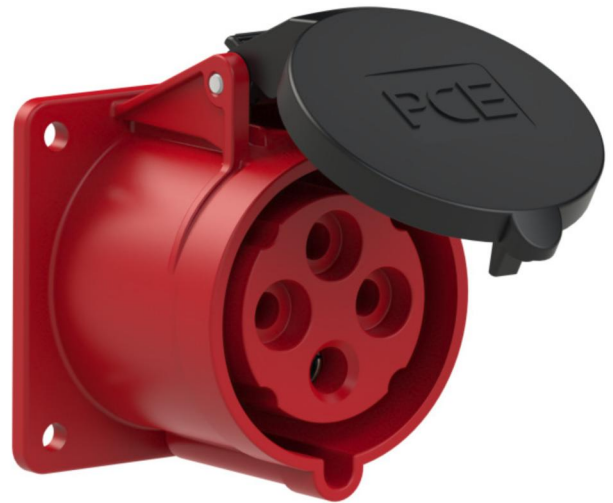


## PCE data sheet

article#	<b>3249-6f7v</b>
article description	<b>CEE-receptacle flange 75x75 straight 30A 3P4W 6h IP44 UL</b>
description long	CEE-receptacle flange 75x75 straight 30A 3P4W 6h IP44 UL (PCE430R6Sv) housing material: PA6 rated current: 32A/30A number of poles: 3P4W (4p) clock position: 6h rated voltage: 380Vac contacts: brass nickel plated connection technology: screw terminals dimensions (flange/fixing center): 75x75mm / 60x60mm IP protection class: IP44
country of origin	AT
customs number	85366990

ETIM 7.0	EC001317
IEC-amperage	32 A
Amperage acc. UL/CSA (for UL-version)	30 A
Number of poles	4
Clock hour position	6 h
Identification colour	Red
Degree of protection (IP)	IP44
Connection system	Screwed terminal
Angle of plug	Straight
Material	Plastic
Contact material	CuZn
Surface finish contacts	Nickel-plated
Flange size vertical	75 mm
Drill hole distance vertical	60 mm
Flange size horizontal	75 mm
Drill hole distance horizontal	60 mm

wire flexible	2,5-6 mm <sup>2</sup>
wire solid	2,5-10 mm <sup>2</sup>
contact screws	110 Ncm
dismantling length	50 mm
stripping length	12-14 mm



[www.manufacturer-safety.info](http://www.manufacturer-safety.info)