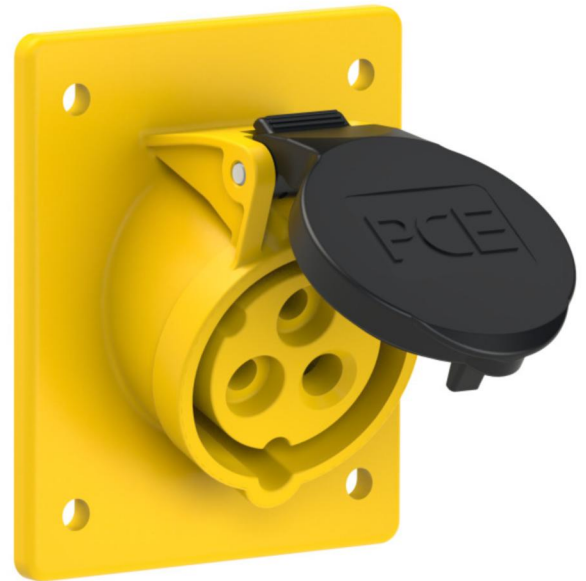


PCE data sheet

article#	4139-4f8
article description	CEE-receptacle flange 80x97 angled 20A 2P3W 4h IP44 UL
description long	CEE-receptacle flange 80x97 angled 20A 2P3W 4h IP44 UL (PCE320RA4S) housing material: PA6 rated current: 16A/20A number of poles: 2P3W (3p) clock position: 4h rated voltage: 120Vac contacts: brass connection technology: screw terminals dimensions (flange/fixing center): 80x97mm / 60x73mm IP protection class: IP44
GTIN (EAN)	9003399762376
country of origin	AT
customs number	85366990
net weight	0.116 kg
packaging quantity	10

ETIM 7.0	EC001317
IEC-amperage	16 A
Amperage acc. UL/CSA (for UL-version)	20 A
Number of poles	3
Clock hour position	4 h
Identification colour	Yellow
Degree of protection (IP)	IP44
Connection system	Screwed terminal
Angle of plug	Angled
Material	Plastic
Contact material	CuZn
Surface finish contacts	Untreated
Flange size vertical	97 mm
Drill hole distance vertical	73 mm
Flange size horizontal	80 mm
Drill hole distance horizontal	60 mm

wire flexible	1-2,5 mm ²
wire solid	1-4 mm ²
contact screws	100 Ncm
dismantling length	50 mm
stripping length	10-12 mm



www.manufacturer-safety.info