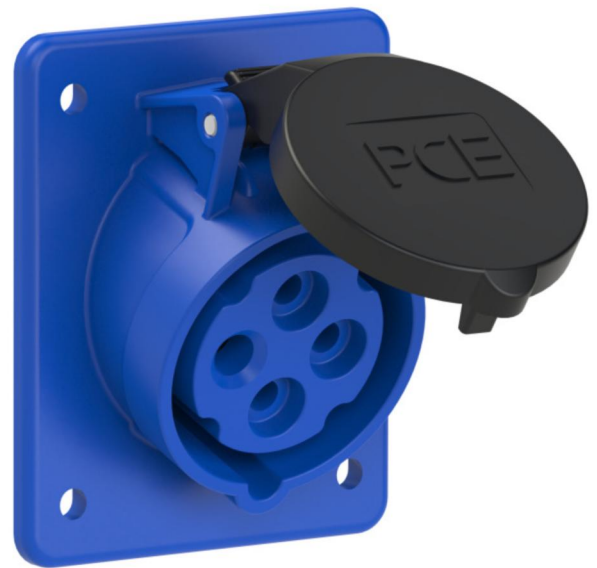


## PCE data sheet

article#	<b>4149-9f8v</b>
article description	<b>CEE-receptacle flange 80x97 angled 20A 3P4W 9h IP44 UL</b>
description long	CEE-receptacle flange 80x97 angled 20A 3P4W 9h IP44 UL (PCE420RA9Sv) housing material: PA6 rated current: 16A/20A number of poles: 3P4W (4p) clock position: 9h rated voltage: 250Vac contacts: brass nickel plated connection technology: screw terminals dimensions (flange/fixing center): 80x97mm / 60x73mm IP protection class: IP44
country of origin	AT
customs number	85366990

ETIM 7.0	EC001317
IEC-amperage	16 A
Amperage acc. UL/CSA (for UL-version)	20 A
Number of poles	4
Clock hour position	9 h
Identification colour	Blue
Degree of protection (IP)	IP44
Connection system	Screwed terminal
Angle of plug	Angled
Material	Plastic
Contact material	CuZn
Surface finish contacts	Nickel-plated
Flange size vertical	97 mm
Drill hole distance vertical	73 mm
Flange size horizontal	80 mm
Drill hole distance horizontal	60 mm

wire flexible	1-2,5 mm <sup>2</sup>
wire solid	1-4 mm <sup>2</sup>
contact screws	100 Ncm
dismantling length	50 mm
stripping length	10-12 mm



[www.manufacturer-safety.info](http://www.manufacturer-safety.info)